

CONCRETE S - Spatula

COS1: visolcalce extra fine - cos1 + vixalit - cos1



COS3: visolcalce extra fine - cos3 + vixalit - cos3



COS2: visolcalce extra fine - cos1 + vixalit - cos2



COS4: visolcalce extra fine - cos4 + vixalit - cos4



RUSTEN

Modern decorative effect that recalls the typical colours and textures of the natural processes of iron oxidation (rusting)

Description
Inspired by the natural oxidation processes of iron, Rusten comes from the creative combination of two decorative finishes: the Lithos Matt plaster base and the water-based micaceous iron oxide Rusten Finish enamel as a finishing coat. Available in many colour combinations, from the classic tones of rust red to greens, blues and browns or various greys. It provides the opportunity to create modern environments with distinctive personalities in warm and cool shades. Ideal for large walls or small-scale finishing touches, thanks to the grainy surface, with the appropriate lighting it creates environments with striking glints of light.

LITHOS MATT

Finishing plaster with matt marble effect

Consumption / Yield rate
1,8 kg/m² (total consumption)

Interiors / Exteriors

Main tools
Steel trowel, Roller

RUSTEN FINISH

Water-based enamel antiqued effect that contains micaceous iron oxide.

12,0 - 14,0 m²/l (yield)

CONCRETE B

Decorative effect that recalls the textures of concrete rethought in an elegant contemporary design style

Description
Inspired by concrete, Concrete B (Brush) is produced by the combination of two decorative products: Ghibli paint with quartz sand and the siloxane patina Viersil Vel transparent coloured white to finish. Available in different shades, several greys or various blues and yellows, it is a decorative effect for modern elegant residential and commercial environments. The application proposed follows the design of true reinforced concrete with a touch of elegance lent by the fine grain of the product.

GHIBLI

Quartz paint with sand effect

Consumption / Yield rate
2,0 m²/kg (yield)

Interiors / Exteriors

Main tools
Brush

VIEROSIL VEL

Water repellent, acryl-siloxane matt glaze

7,0 - 8,0 m²/l (yield)

CONCRETE S

Textured decorative effect with a lime base reminiscent of concrete textures spanning contemporary and traditional design.

Description
Inspired by concrete, Concrete S (Spatula) is produced by the combination of two lime products: Visolcalce extra fine as textured base coating and Vixalit. Lime-based paint to be used as a tone on tone finish. Available in a design typical of reinforced concrete, in various shades of grey, it is ideal for creating modern environments with aged wall-style textured surfaces typical of contemporary design for the home or elsewhere.

VISOLCALCE EXTRA FINE

Slaked lime based plaster

Consumption / Yield rate
5,0 kg/m² (total consumption)

Interiors / Exteriors

Main tools
Steel trowel, Roller

VIXALIT

Lime based paint

2,5 - 3,0 m²/l (yield)

MMEXCC0065/16

RUSTEN • CONCRETE B • CONCRETE S

Viero



RUSTEN
CONCRETE B
CONCRETE S

CONCRETE B - Brush

■ **COB1**
Ghibli - GH62
Vierosil vel - VE150

□ ■ **COB2**
Ghibli - GH64
Vierosil vel - VE150

■ □ **COB3**
Ghibli - GH70
Vierosil vel - VE150

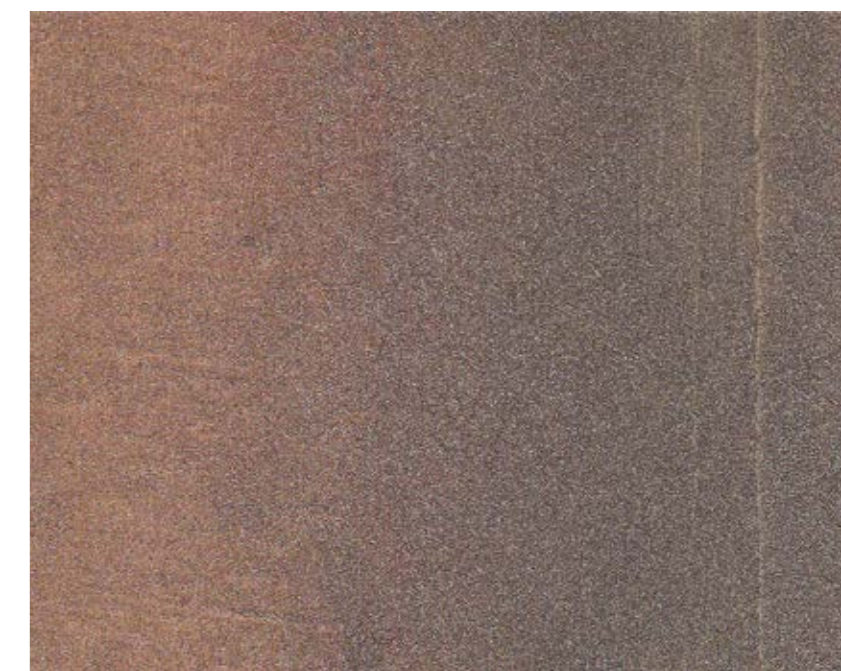
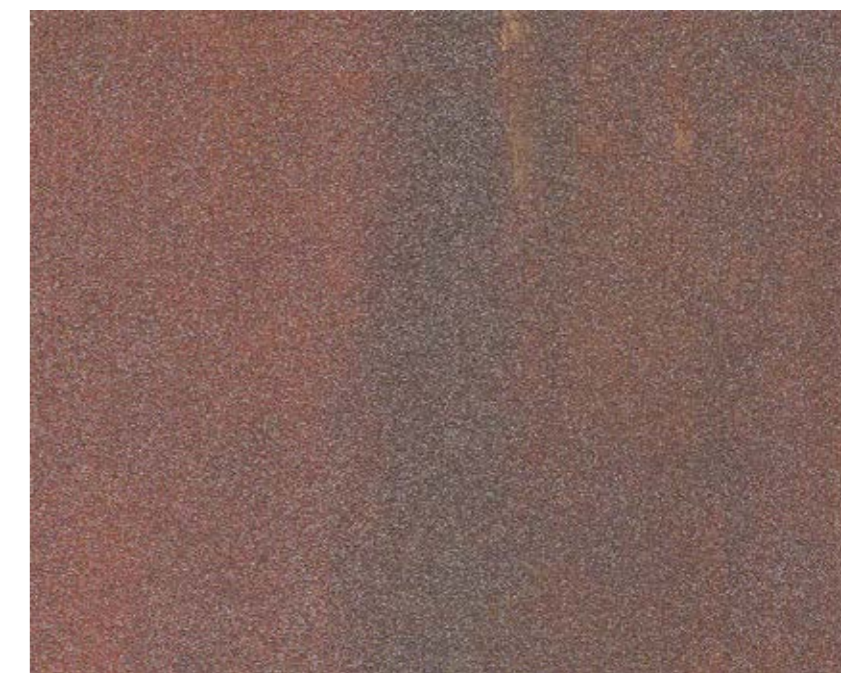
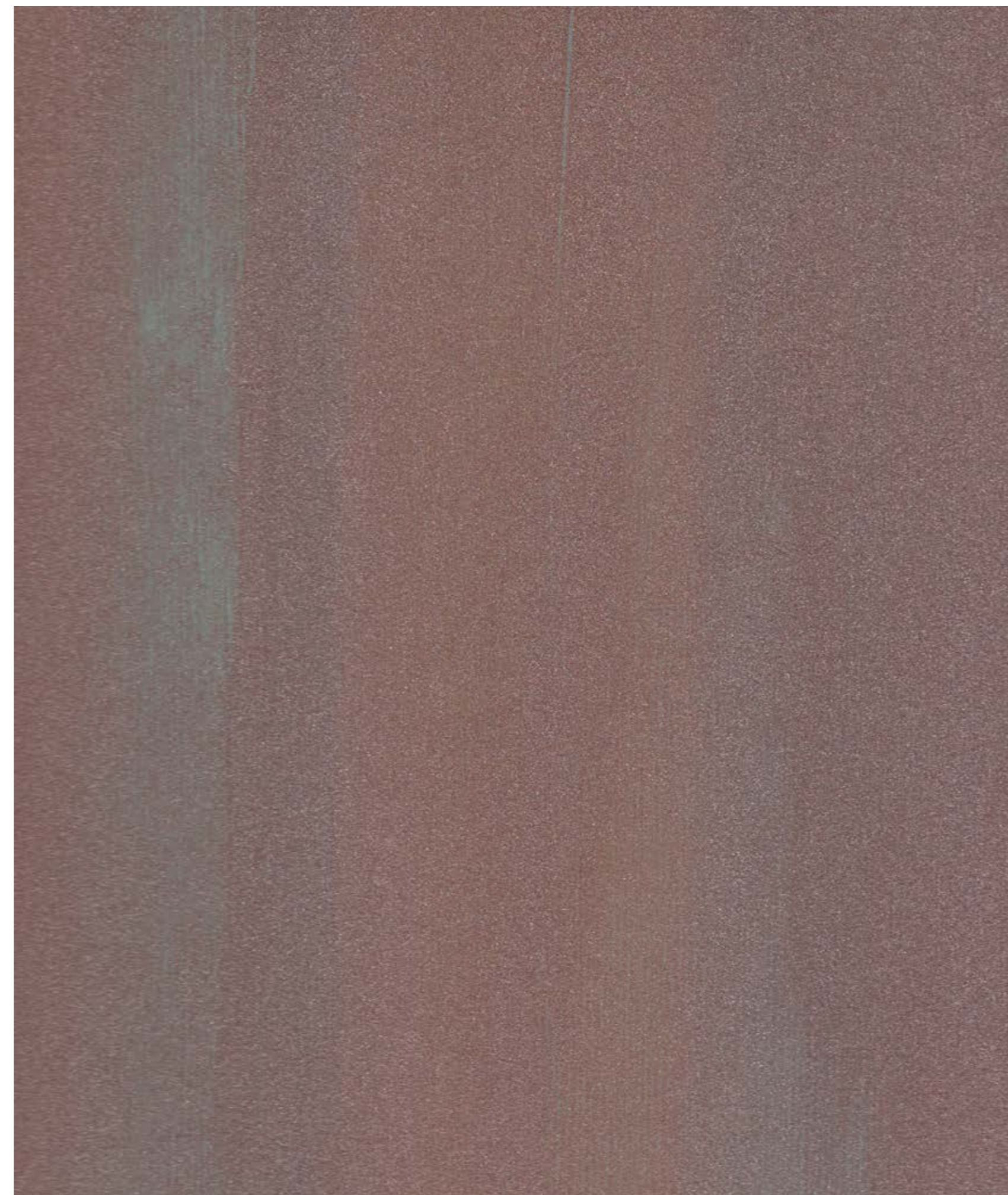
□ ■ **COB4**
Ghibli - GH99
Vierosil vel - VE150

■ □ **COB5**
Ghibli - GH67
Vierosil vel - VE150

□ ■ **COB6**
Ghibli - GH100
Vierosil vel - VE150



RUSTEN - RED1 Lithos matt - LM25 + Rusten finish - RF01 + Rusten finish - RF02



RUSTEN

■ □ **RED2**
Lithos matt - LM26
Rusten finish - RF03
Rusten finish - RF04
Rusten finish - RF05

□ ■ **RED3**
Lithos matt - LM26
Rusten finish - RF06
Rusten finish - RF07

■ □ **RED4**
Lithos matt - LM02
Rusten finish - RF08
Rusten finish - RF05
Rusten finish - RF07

□ ■ **RED5**
Lithos matt - LM05
Rusten finish - RF07
Rusten finish - RF01

■ □ **RED6**
Lithos matt - LM27
Rusten finish - RF05
Rusten finish - RF09

□ ■ **RED7**
Lithos matt - LM13
Rusten finish - RF08
Rusten finish - RF07
Rusten finish - RF01